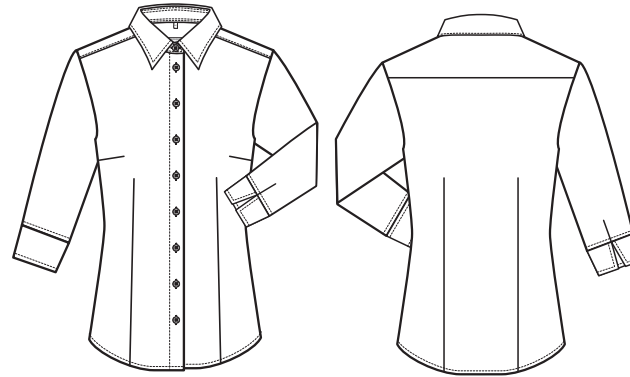


BASIC

Regular Fit



STYLE
6517



GERMAN

DAMEN-BLUSE

- Regular Fit
- Elastisch
- $\frac{3}{4}$ Arm
- Kent-Kragen
- **GRÖSSEN:** 32-52

NR: 6517.1120.090 WEISS
NR: 6517.1120.010 SCHWARZ
NR: 6517.1120.029 BLEU

ENGLISH

LADIES BLOUSE

- regular fit
- elastic
- $\frac{3}{4}$ sleeve
- Kent collar
- **SIZES:** 32-52

NO: 6517.1120.090 WHITE
NO: 6517.1120.010 BLACK
NO: 6517.1120.029 BLEU

FRENCH

CHEMISIER FEMME

- Regular fit
- Stretch
- Manches $\frac{3}{4}$
- Col Kent
- **TAILLES :** 32-52

RÉF : 6517.1120.090 BLANC
RÉF : 6517.1120.010 NOIR
RÉF : 6517.1120.029 BLEU CLAIR

DUTCH

DAMES BLOUSE

- regular fit
- elastisch
- $\frac{3}{4}$ mouw
- Kent-kraag
- **MAAT:** 32-52

NR: 6517.1120.090 WIT
NR: 6517.1120.010 ZWART
NR: 6517.1120.029 BLEU

GEWEBE: 62% Baumwolle, 35% Polyester, 3% Elasthan, 130 g/m²

PFLERGE:



Easy Care



Stretch

FABRIC: 62% cotton, 35% polyester, 3% elastane, 130 g/m²

CARE:



Easy Care



Stretch

TEXTILE : 62 % coton, 35 % polyester, 3 % élasthanne, 130 g/m²

ENTRETIEN :



Easy Care



Stretch

DOEK: 62% katoen, 35% polyester, 3% elastaan, 130 g/m²

ONDERHOUD:



Easy Care



Stretch