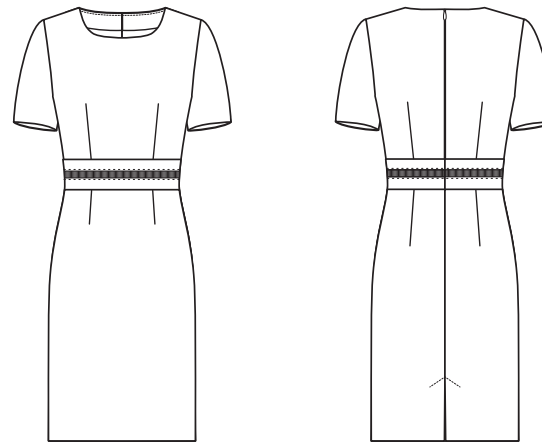


MODERN WITH 37.5[®]

Regular Fit



STYLE 1064



GERMAN

DAMEN-ETUIKLEID

- Regular Fit
- Rundhalsausschnitt
- Taillenband
- AMF-Handstich
- Schlitz hinten
- Elastisches Futter
- Rückenlänge 97 cm | Gr. 38
- **GRÖSSEN:** 32-52

ENGLISH

LADIES SHEATH DRESS

- regular fit
- round neck
- waist band
- AMF hand stitch
- vent at the back
- stretch lining
- back length 97 cm | size 38
- **SIZES:** 32-52

FRENCH

ROBE FOURREAU FEMME

- Regular fit
- Col rond
- Bande de la taille
- Point à la main AMF
- Fente arrière
- Doublure élastique
- Longueur dos 97 cm | taille 38
- **TAILLES :** 32-52

DUTCH

DAMES ETUI JURK

- regular fit
- ronde hals
- tailleband
- AMF-stitching
- split achterzijde
- elastische voering
- ruglengte 97 cm | maat 38
- **MAAT:** 32-52

NR: 1064.2810.010 PINPOINT SCHWARZ
 NR: 1064.2810.020 PINPOINT MARINE
 NR: 1064.2820.010 SCHWARZ
 NR: 1064.2820.014 HELLGRAU
 NR: 1064.2820.021 DUNKELBLAU

NO: 1064.2810.010 PINPOINT BLACK
 NO: 1064.2810.020 PINPOINT NAVY BLUE
 NO: 1064.2820.010 BLACK
 NO: 1064.2820.014 LIGHT GREY
 NO: 1064.2820.021 DARK BLUE

RÉF : 1064.2810.010 PINPOINT NOIR
 RÉF : 1064.2810.020 PINPOINT BLEU MARINE
 RÉF : 1064.2820.010 NOIR
 RÉF : 1064.2820.014 GRIS CLAIR
 RÉF : 1064.2820.021 BLEU FONCÉ

NR: 1064.2810.010 PINPOINT ZWART
 NR: 1064.2810.020 PINPOINT MARINE
 NR: 1064.2820.010 ZWART
 NR: 1064.2820.014 LICHTGRIJS
 NR: 1064.2820.021 DONKERBLAUW

GEWEBE: 52% Polyester, 46% Schurwolle, 2% Elasthan, 190 g/m²
FUTTER: 100% Polyester

PFLERGE:



FABRIC: 52% polyester, 46% virgin wool, 2% elastane, 190 g/m²
LINING: 100% polyester

CARE:



TEXTILE : 52 % polyester, 46 % laine vierge, 2 % élasthanne, 190 g/m²
DOUBLURE : 100 % polyester

ENTRETIEN :



DOEK: 52% polyester, 46% scheerwol, 2% elastaan, 190 g/m²
BINNENVOERING: 100% polyester

ONDERHOUD:

